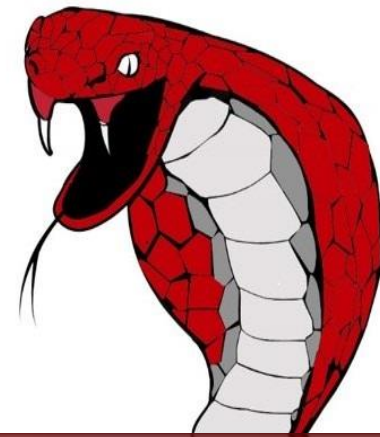


# Sharyland Advanced Academic Academy

***“A COLLEGE  
DEGREE  
WITHIN REACH  
OF EVERY  
STUDENT.”***



SHARYLAND ADVANCED ACADEMIC ACADEMY



# Professional Staff at Sharyland A<sup>3</sup>

- ▶ 2018-2019 Staff:
  - ▶ Principal, Mr. Ivan Karr
  - ▶ Dean of Instruction, Mrs. Diana Rojas
  - ▶ Counselor, Mrs. Corina Lopez-Garcia
  - ▶ Go Center Advisor, Ivana Ybarra
- ▶ All our faculty teaching Dual Enrollment courses will have a Master's Degree in the content area which they are teaching. They are also certified by STC.
- ▶ All teachers will have a teacher website with their information, email, phone extension, course syllabus, and other pertinent information.



## Bell Schedule at Sharyland A<sup>3</sup>

- ▶ The bell schedule will be the exact same bell schedule as Pioneer and Sharyland High School.
- ▶ Classes start at 8:05 am and end at 4:00 pm.
- ▶ Students take four 90 minute classes in the fall and four 90 minute classes in the spring and one 50 minutes class all year long. They can earn up to nine credits.
- ▶ PHS zoned students needing transportation will take the neighborhood bus to PHS. Bus leaves PHS at 7:45 to SA3.

# College Transition Course at Sharyland A<sup>3</sup>

- ▶ All freshman students will have an advisory/homeroom class. This will be their 50 minute all year class.
- ▶ During advisory students will receive instruction from the College Transition Course Curriculum. The class will focus on:
  - ▶ Study skills
  - ▶ Test taking skills
  - ▶ Time management
  - ▶ Career Development
  - ▶ College entrance requirements
  - ▶ Texas Success Initiative preparation (college placement test)
- ▶ During this class students will create a portfolio and track their grades, assessment scores, high school graduation plan and college degree plan.

# Freshman Course Selection at Sharyland A<sup>3</sup>

- ▶ 9 credits for freshman year
- ▶ Required courses for **all** freshman
  - ▶ Math (Algebra 1 Pre-AP, Geometry Pre-AP, or Algebra 2 Pre-AP)
  - ▶ Science (Biology Pre-AP)
  - ▶ English (English 1 Pre-AP)
  - ▶ Social Studies (World Geography Pre-AP)
  - ▶ **Spanish 1411/2313 or Computer Science 1301** **or**  
**Speech 1301- College Credit**
  - ▶ PE (Band is usually all year = 2 credits)
    - ▶ Before/After school athletics
  - ▶ College Transition Course (only students at Sharyland A<sup>3</sup>)
  - ▶ Elective
  - ▶ Elective

# Participation in Extracurricular Activities

- ▶ If your child is in band or athletics they will participate with the campus they are zoned to.
- ▶ Band is 1<sup>st</sup> block. Bus leaves to SA3 at 9:15.
- ▶ Your child can still participate in any sport without enrolling in the class as long as they attend before/after school practices.
- ▶ Your child can participate in UIL academics at the campus they are zoned to.
- ▶ Transportation will be provided.



Zoned to Home Campus (SHS/PHS)		Can participate with SHS regardless of zoned home campus	
UIL Sanctioned Events	Academic UIL	Folklorico	Non-UIL Sanctioned Events
	Band	Dance	
	Theatre Arts	Chess	
	Mariachi UIL	Mariachi (Non-UIL)	
	Spirit Team	Cheer (Non-UIL)	
	Athletics (before or after school)	Career & Technical Student Organizations (CTSO's)	
	Choir		

# Participation in Clubs and Organizations

- ▶ SA3 will offer clubs and organizations such as:
  - ▶ Student Council
  - ▶ National Honor Society
  - ▶ Masterminds
  - ▶ Spanish Club
  - ▶ Chess
  - ▶ Women's Empowerment
  - ▶ Ping Pong
- ▶ Your child can also participate in clubs and organizations at SHS or PHS but they must meet all requirements.





# Texas Success Initiative

- ▶ The Texas Success Initiative requires all new students who are entering college for the first time to be assessed academically to determine their level of college readiness in Reading, Math & Writing.



# TSI Assessment

- ▶ All students must complete a pre-assessment activity and practice test prior to taking the TSI Assessment.

Area	College Readiness Cut Score
Reading	351
Math	350
Writing	Essay of 5 or Essay of 4 and multiple choice of 340 or higher



# College Course Requirements

- ▶ Students will have to option to follow the **Interdisciplinary Studies, Biology, Computer Science, or Engineering Degree Plan** at Sharyland Advanced Academic Academy.
  - ▶ “Interdisciplinary” simply means that you are combining two or more academic disciplines or fields of study.
  - ▶ Students are able to get a broad-based college education in multiple fields of study.
  - ▶ Students can make informed choices about where they want to take their education in the future.
  - ▶ **Courses taken in Associates of Arts or Associates of Science are transferrable to public four year colleges/universities in the State of Texas.**

# Freshmen Orientation Class of 2022

- ▶ Friday, April 24<sup>th</sup>
  - ▶ Apply Texas
  - ▶ Course Requests
  - ▶ Tours
  - ▶ Club and Organization Fair

# Summer Dates 2018

\*Summer Bridge  
June 4th – 6th  
8:30 – 12:30 PM

## Agenda

Day 1 – Welcome, Introductions & Breakout Sessions

Day 2 – Group 1 to STC; Group 2 to Quinta Mazatlan

Day 3 – Group 2 to STC; Group 1 to Quinta Mazatlan

# Summer Dates 2018

## Cobra Camp

- 8 days (Mon.-Thurs.)
- June 11-21 (8:30-12:30)
- Math
- English
- Science
- TSI



956-584-6467

1106 N. SHARY RD., BLDG. A  
MISSION, TX 78572



# Contact Information:

IVAN KARR, PRINCIPAL

EXT 4410

[IVANKARR@SHARYLANDISD.ORG](mailto:IVANKARR@SHARYLANDISD.ORG)

DIANA ROJAS, DEAN OF INSTRUCTION

EXT 4425

[DROJAS@SHARYLANDISD.ORG](mailto:DROJAS@SHARYLANDISD.ORG)

CORINA LOPEZ-GARCIA, COUNSELOR

EXT. 4412

[CLOPEZ-GARCIA@SHARYLANDISD.ORG](mailto:CLOPEZ-GARCIA@SHARYLANDISD.ORG)